

# Grapple Saw Fixed Rotator

- 8-14t IT1600/500.GS
- 14-20t IT1600/800.GS



**FERNTREE  
EQUIPMENT  
& DISTRIBUTION**  
YOUR QUALITY BRAND CONNECTION



100%



MADE IN ITALY



## IT 1600/500 (8 – 13t)

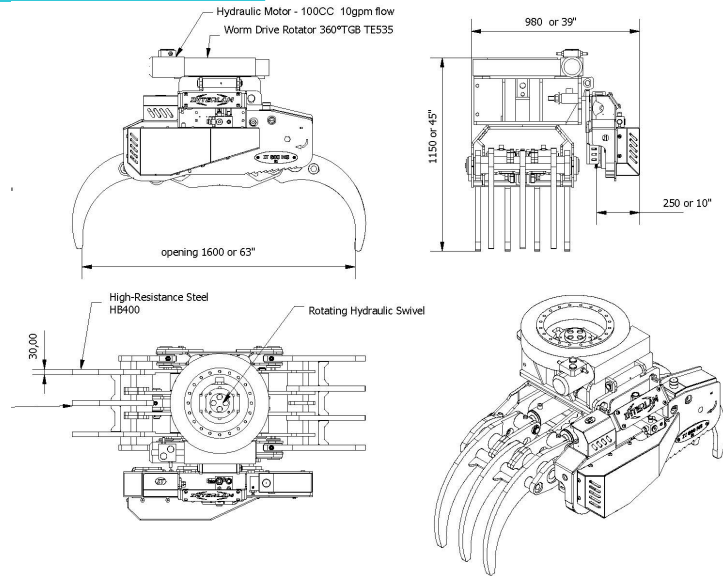
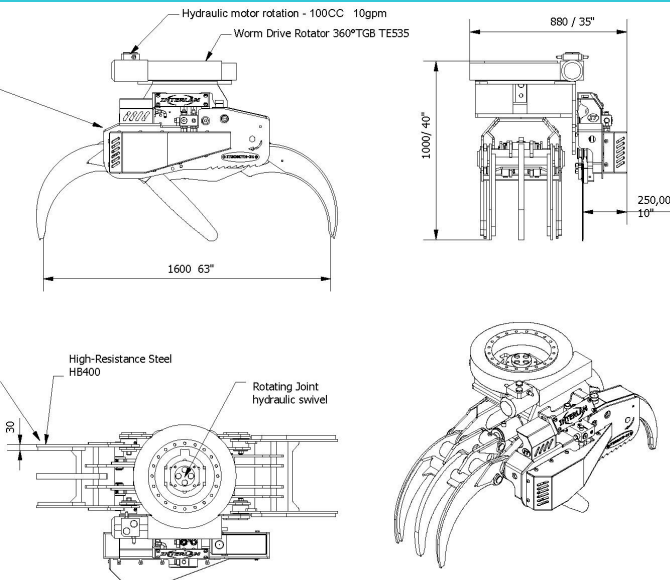


5 Finger Grapple

## IT 1600/800 (14 – 20t)



7 Finger Grapple



| Model       | Weight lbs | Flow Saw  | PSI      | Cutting Diameter | Chain Sprocket | Motor CC        | Chain Tensioner           |
|-------------|------------|-----------|----------|------------------|----------------|-----------------|---------------------------|
| IT1600 /500 | 1650       | 18-26 gpm | 3625 PSI | 20 - 24"         | 404 B11        | Parker F11/10   | Mechanical Quick tension  |
| IT1600 /800 | 1960       | 31-42 gpm | 3625PSI  | 26 - 32"         | 404 Or ¾ C13   | Parker F11 / 19 | Automatic Chain Tensioner |

Technical data are dependent on equipment and may vary.

The images may contain additional options which do not belong to the standard scope of delivery. **INTERLAM** and **FERNTREE Equipment** reserves the right to make amendments and updates at any time without prior notice.

### Standard Equipment

- 45 degree base mount
- 2 auxiliary valve set up
- 404 chain
- Yellow/ Black
- CAMM Worm Drive Rotator
- 5 Finger IT1600/500
- 7 Finger IT 1600/800

### Optional Equipment

- Single auxiliary line set up
- Pin grab Customisation
- Custom Color
- 4 Finger Grapple
- Closed Finger Grapple
- ¾ chain for 14-20t Unit



**FERNTREE  
EQUIPMENT  
& DISTRIBUTION**

YOUR QUALITY BRAND CONNECTION

### Import & Distribution North-America

Info@ferntree.ca  
+1 778 222 9111  
Guelph Ontario Canada  
www.ferntree.ca