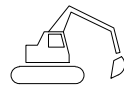
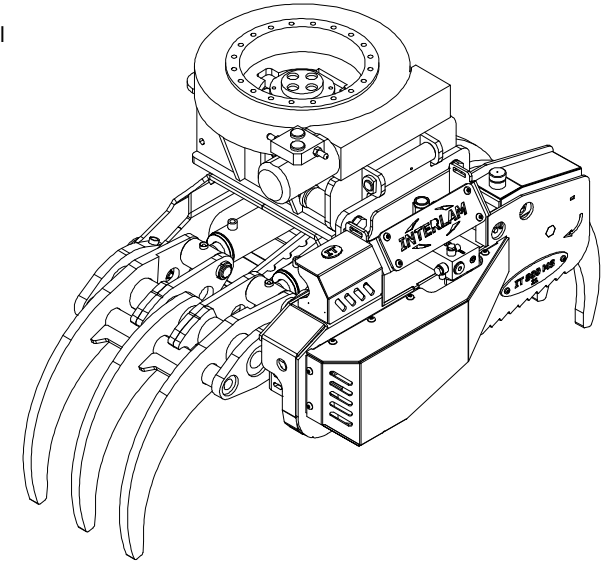
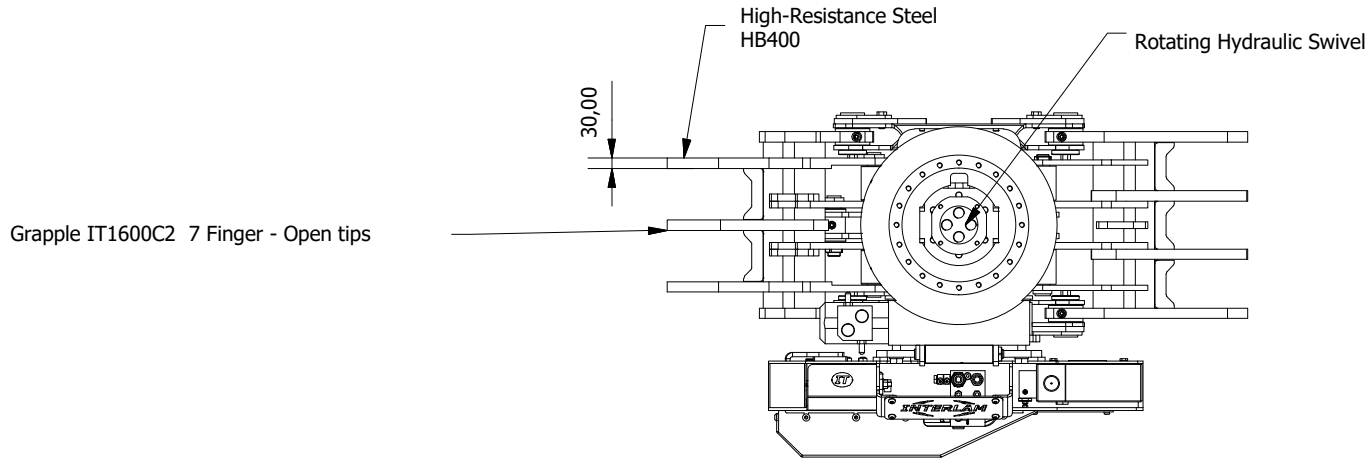
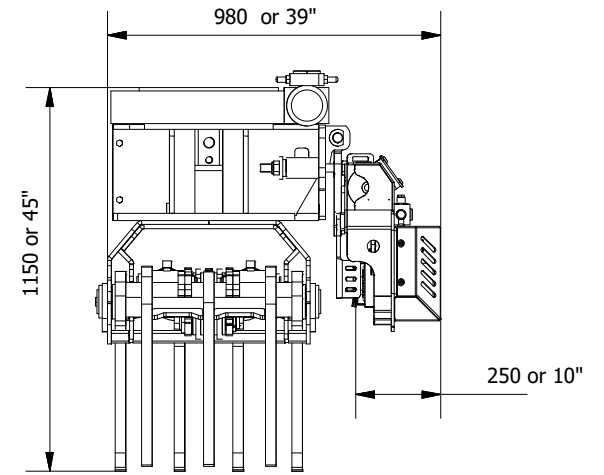
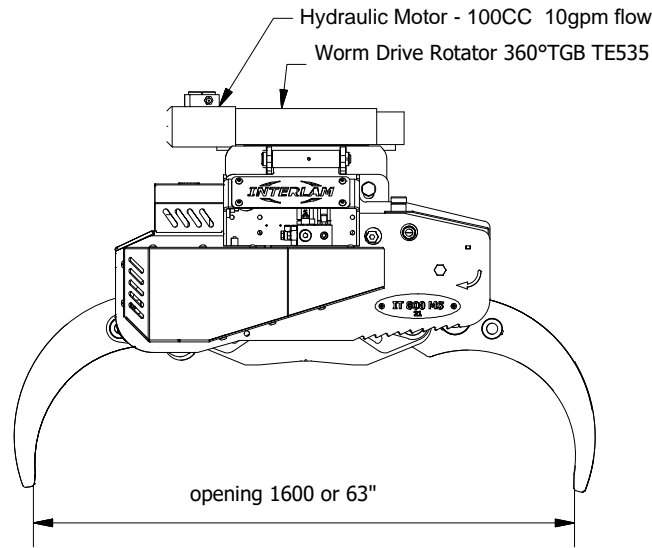


Chainsaw Kit IT800MS

- Weight - 125 Kg / 277lbs
- Max cut diameter - 600/700 mm / 28inch
- Hydraulic Motor- PARKER F11-14/19
- Chain lubrication automatic
- Oil tank - 1,5 lt
- Flow Saw Motor 31 - 42gpm
- Max pressure - 250 Bar / 3525psi
- Quick mechanical chain tensioner
- Drainage straight to the tank
- Saw bar - W82 820 mm 33" or W90 900 mm 36"
- Brand - Oregon , Iggesund . Standard mount.
- Chain - 404"- 2mm
- Sprocket - C13



10 - 20 Ton.



Total weight of equipment

800 / 900 kg
1770lbs / 1995 lbs

INTERLAM
Forestry equipment

Grapple IT1600C2 with Saw Box and Rotator

The measurements can be changed by the manufacturer without notice.

Questo documento è riservato a termini di legge e pertanto è vietato riprodurlo o renderlo comunque noto a terzi senza esplicita autorizzazione.